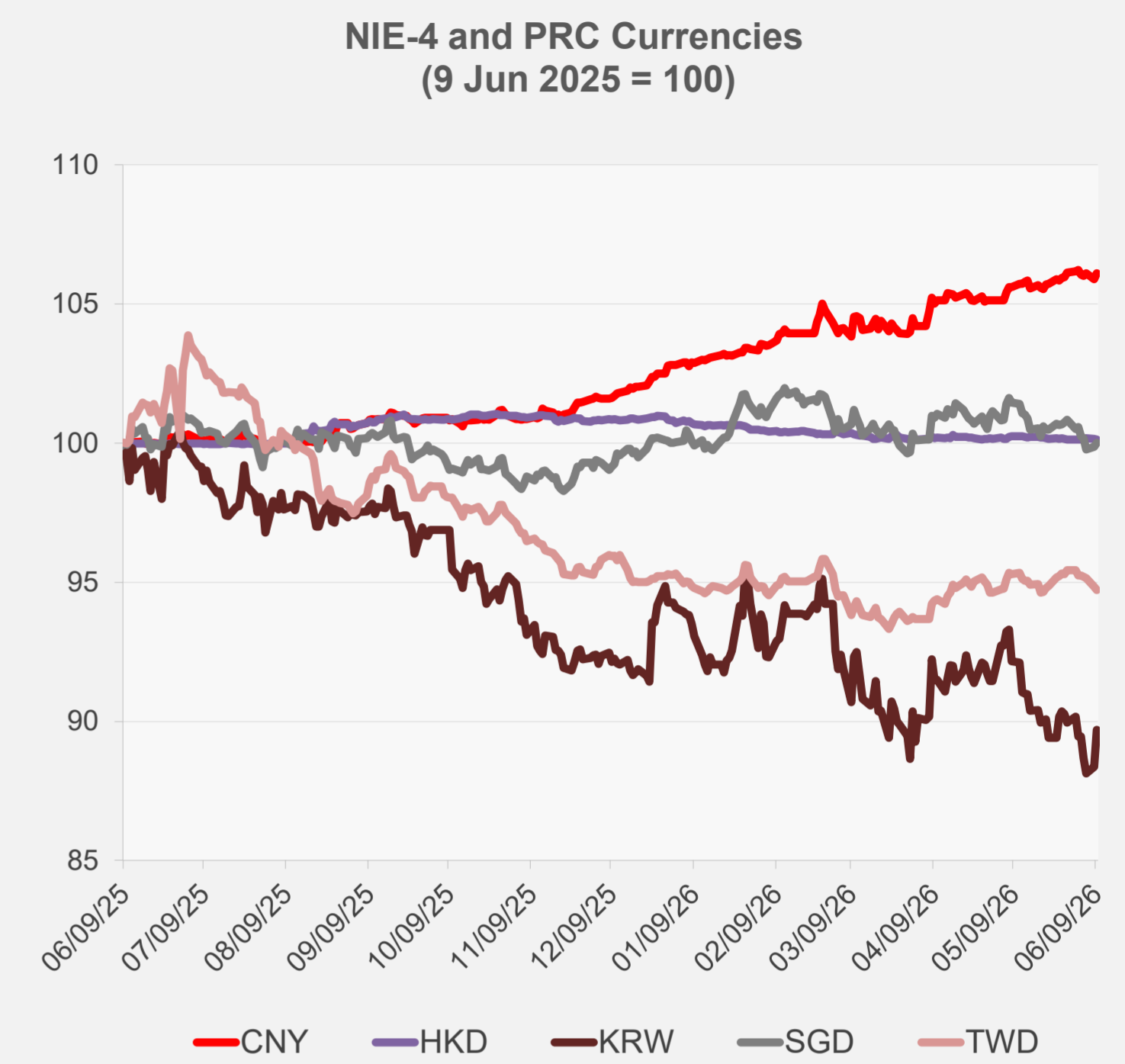
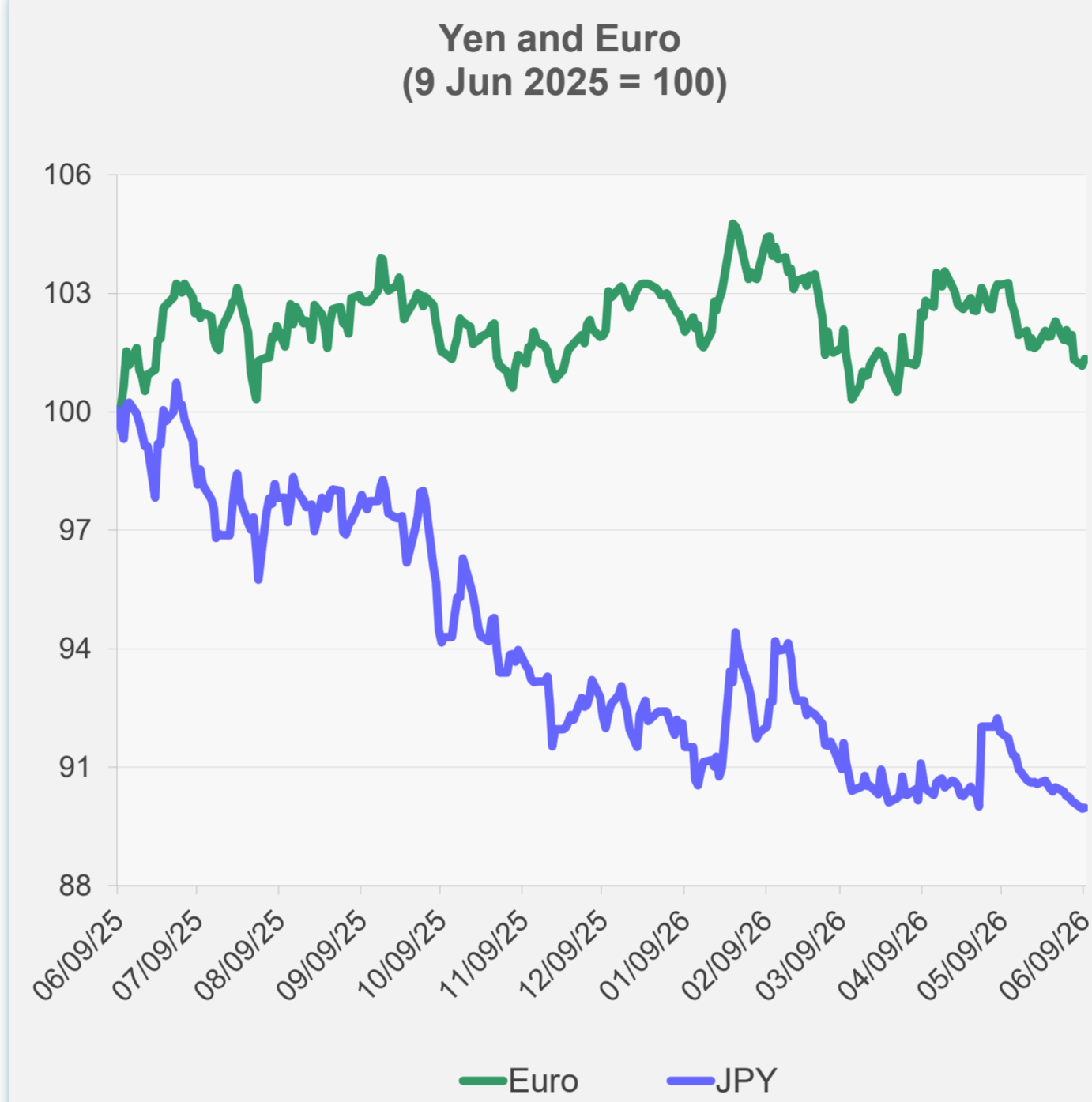
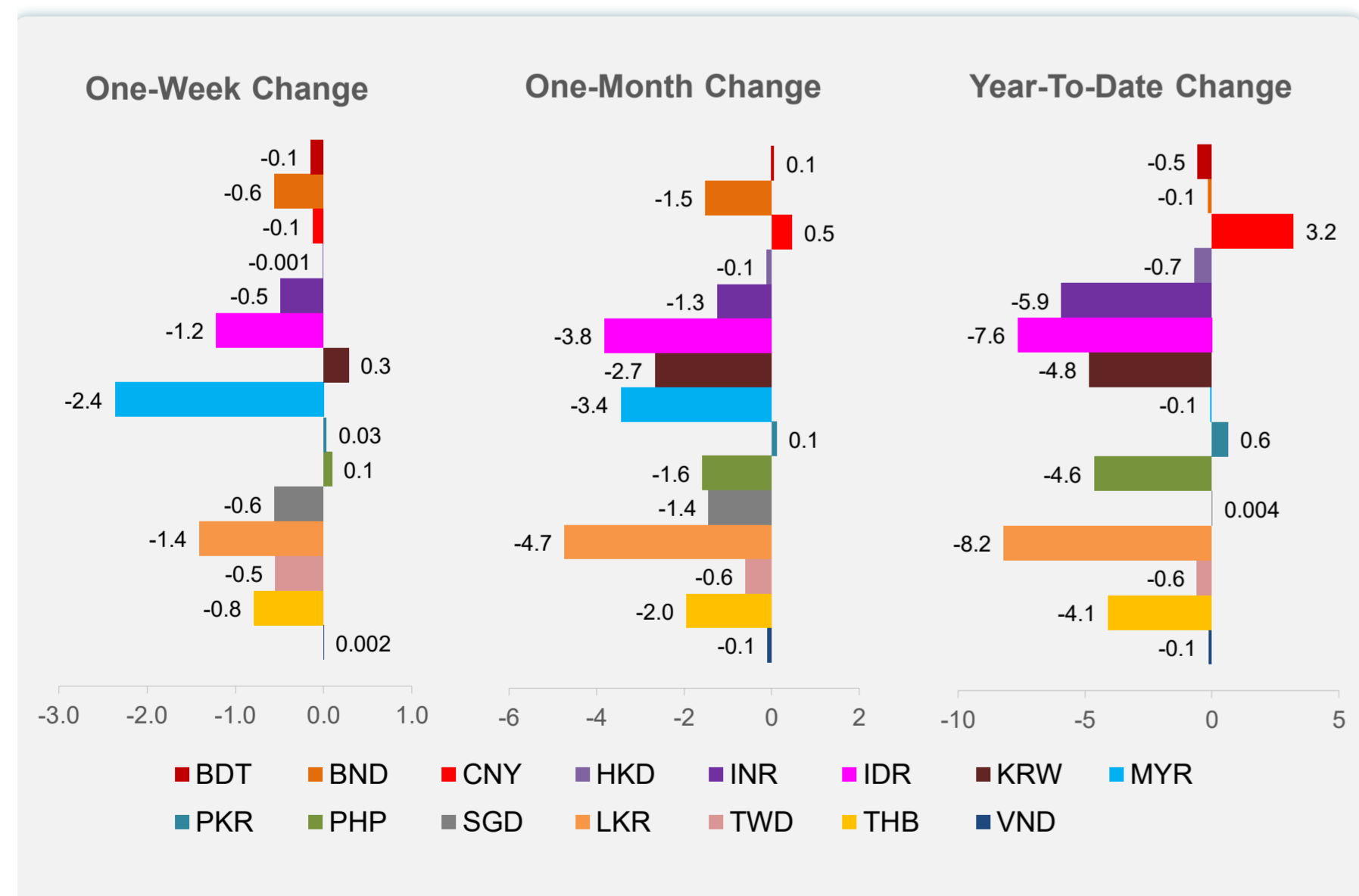
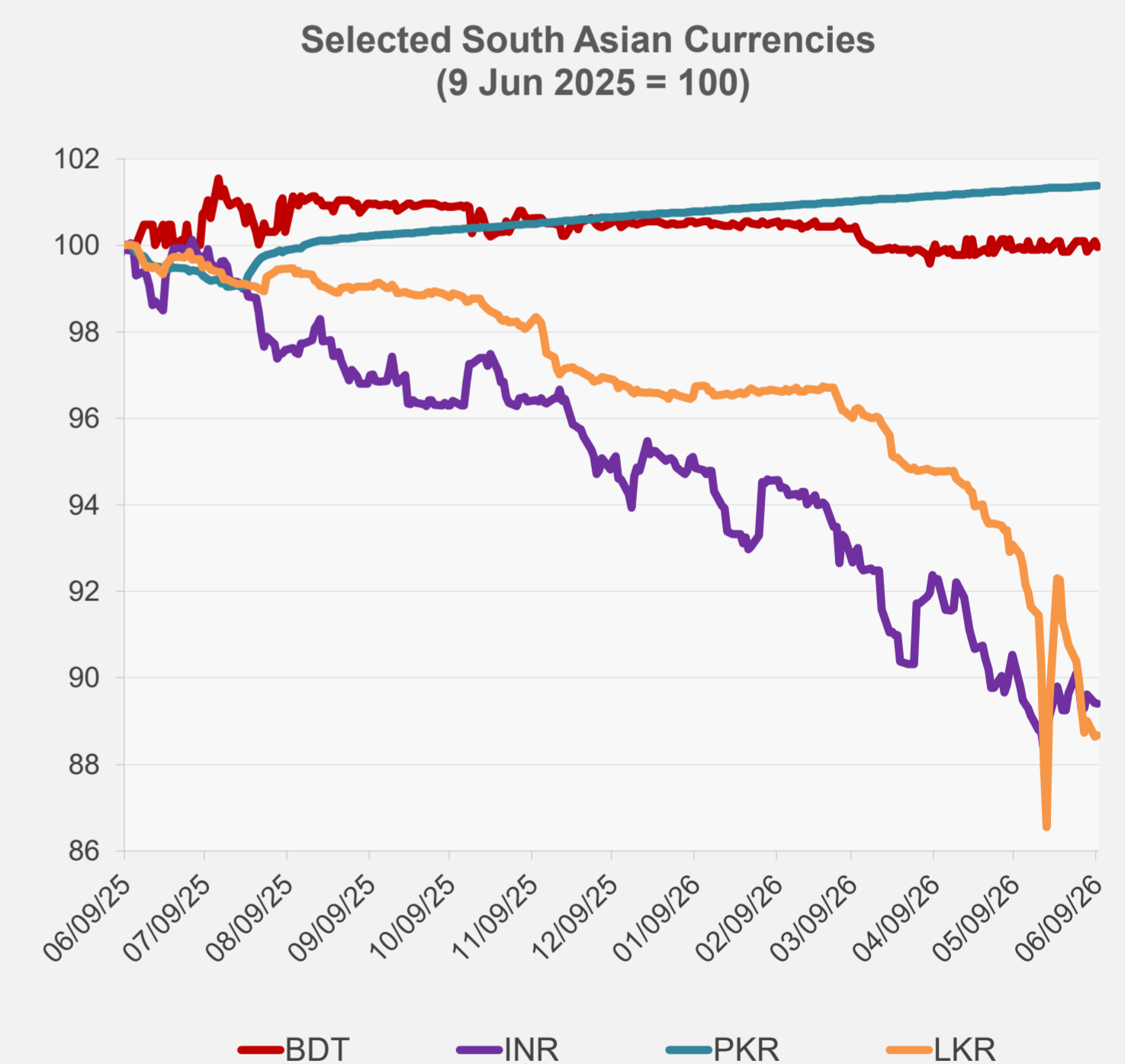
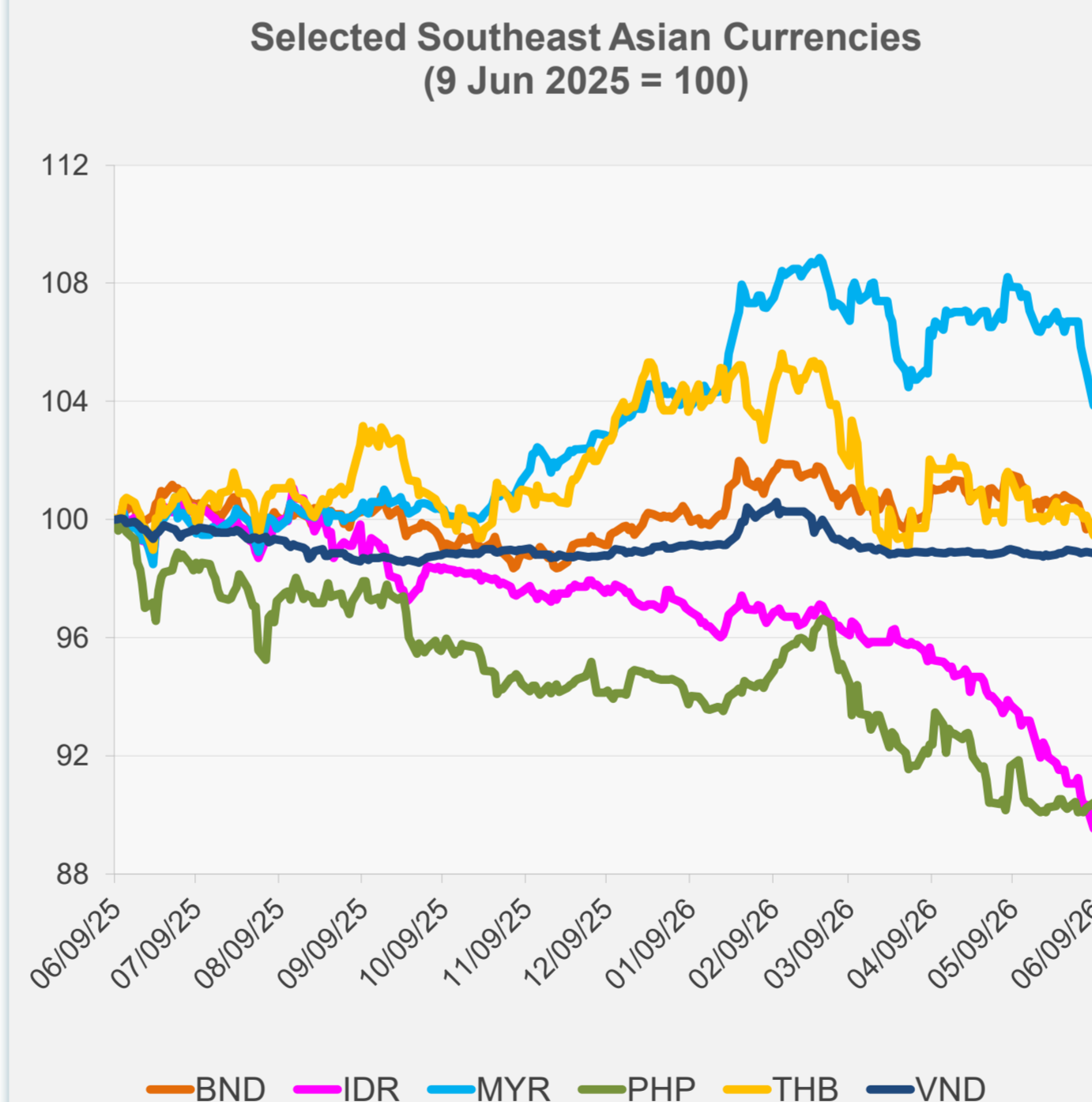


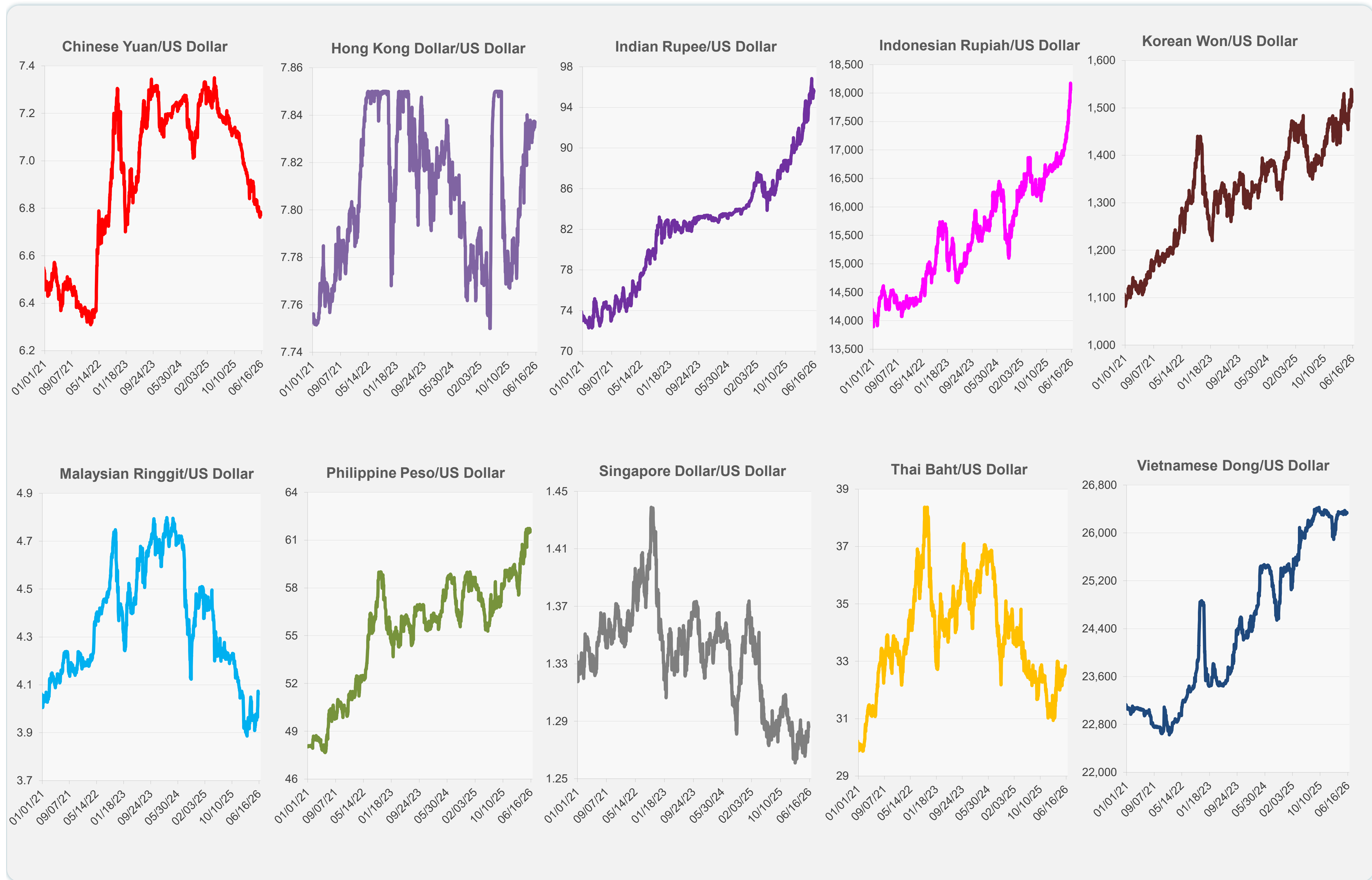
	Latest Closing	% change from Previous Day	% change from 01-Jan-26
Euro	0.86	0.17	-1.55
Japanese yen (JPY)	160.20	0.02	-2.63
Bangladeshi taka (BDT)	122.93	-0.14	-0.55
Brunei dollar (BND)	1.29	0.12	-0.14
Chinese yuan (CNY)	6.77	0.21	3.22
Hong Kong dollar (HKD)	7.84	-0.01	-0.68
Indian rupee (INR)	95.64	-0.02	-5.91
Indonesian rupiah (IDR)	18,055.00	0.66	-7.64
Korean won (KRW)	1,512.10	1.51	-4.83
Malaysian ringgit (MYR)	4.06	0.31	-0.07
Pakistan rupee (PKR)	278.36	0.01	0.63
Philippine peso (PHP)	61.67	-0.26	-4.64
Singapore dollar (SGD)	1.29	0.15	0.00
Sri Lanka rupee (LKR)	337.25	0.03	-8.20
Taipei,China NT dollar (TWD)	31.62	-0.12	-0.57
Thai baht (THB)	32.85	0.00	-4.08
Vietnamese dong (VND)	26,331.50	0.05	-0.12



NIE = Newly Industrialized Economies



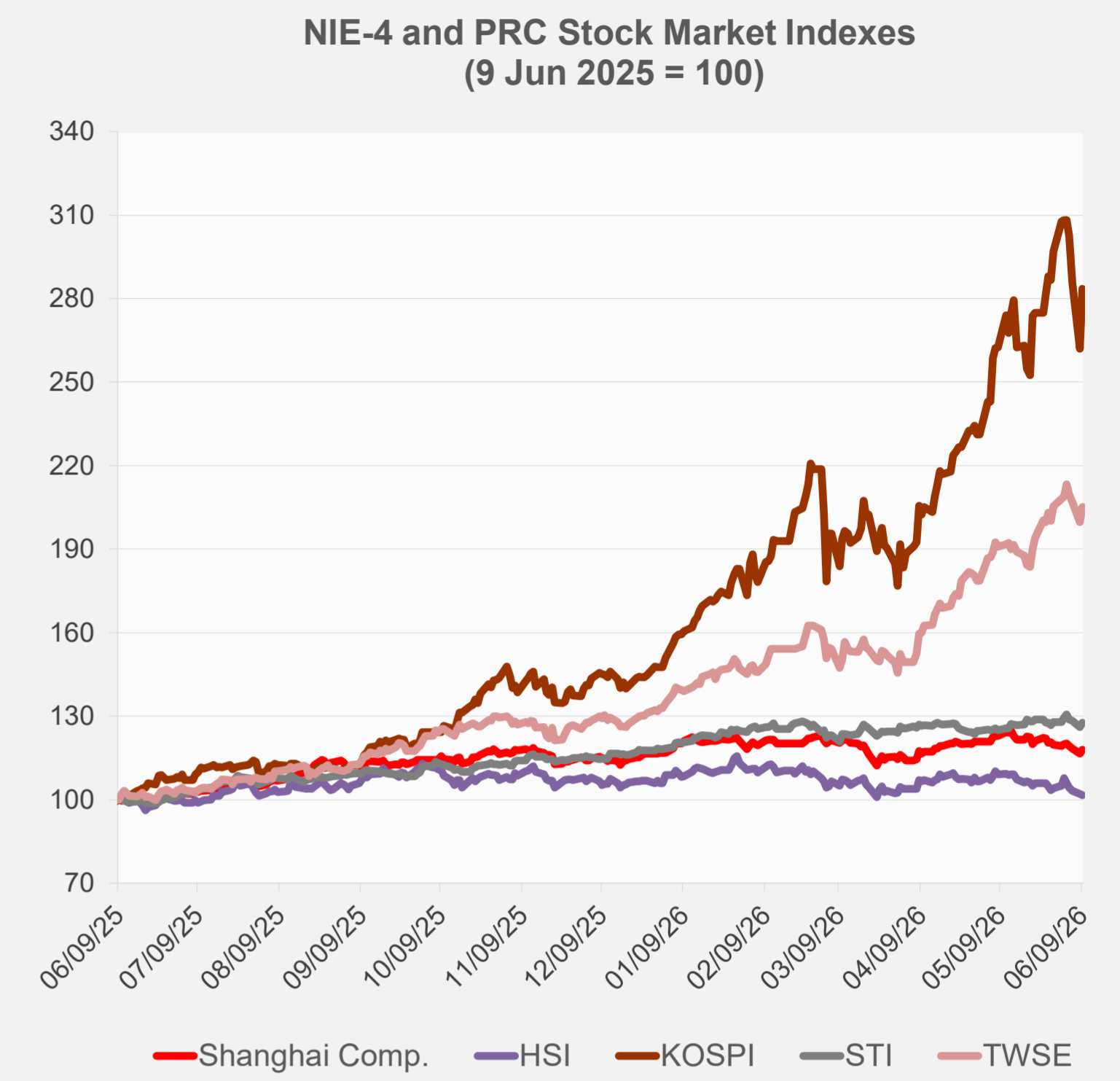
Note: Negative/Decreasing values indicate depreciation of local currency, and positive/increasing values indicate appreciation.  
Source: ADB calculations using data from Bloomberg and Haver Analytics.



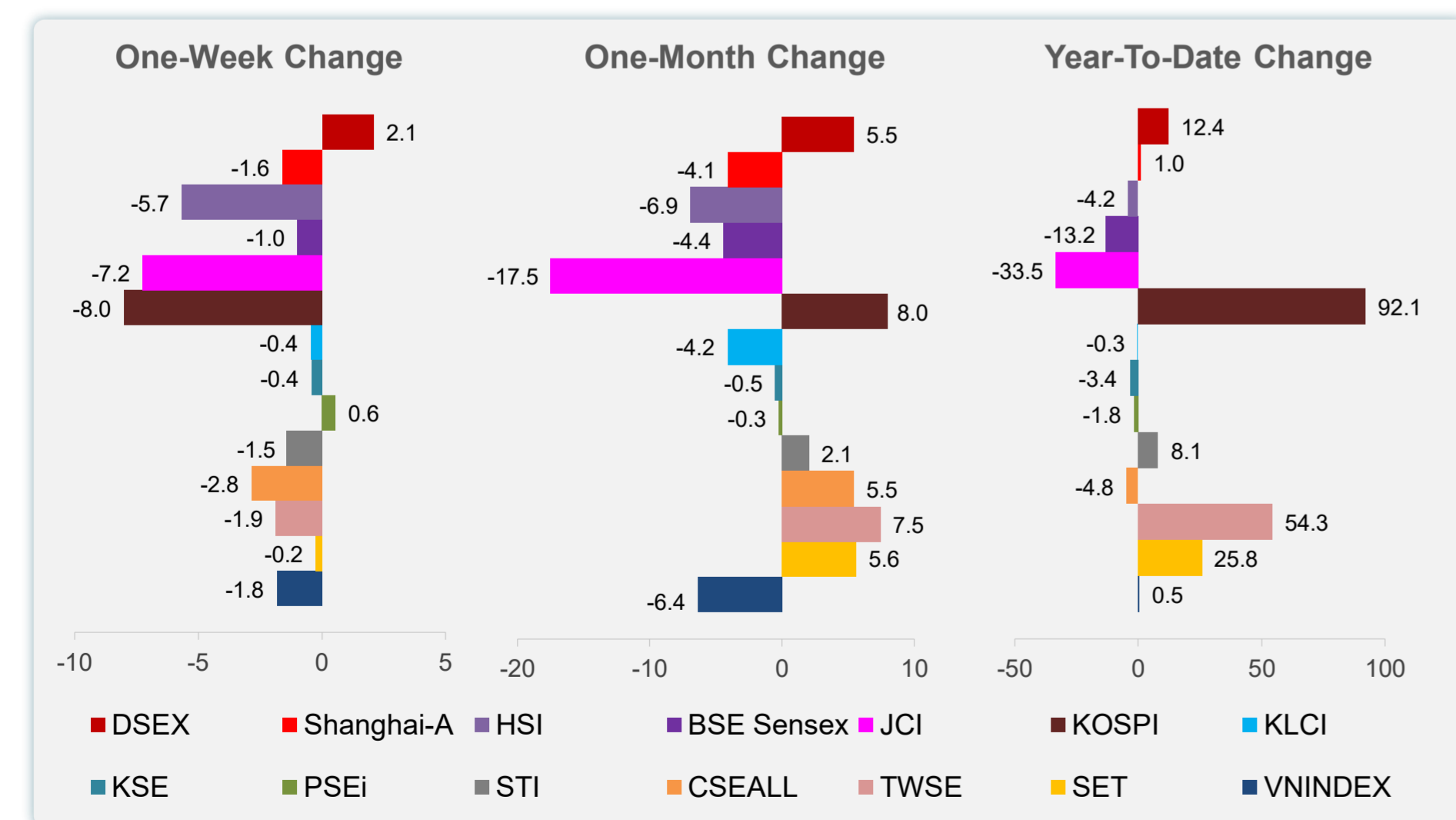
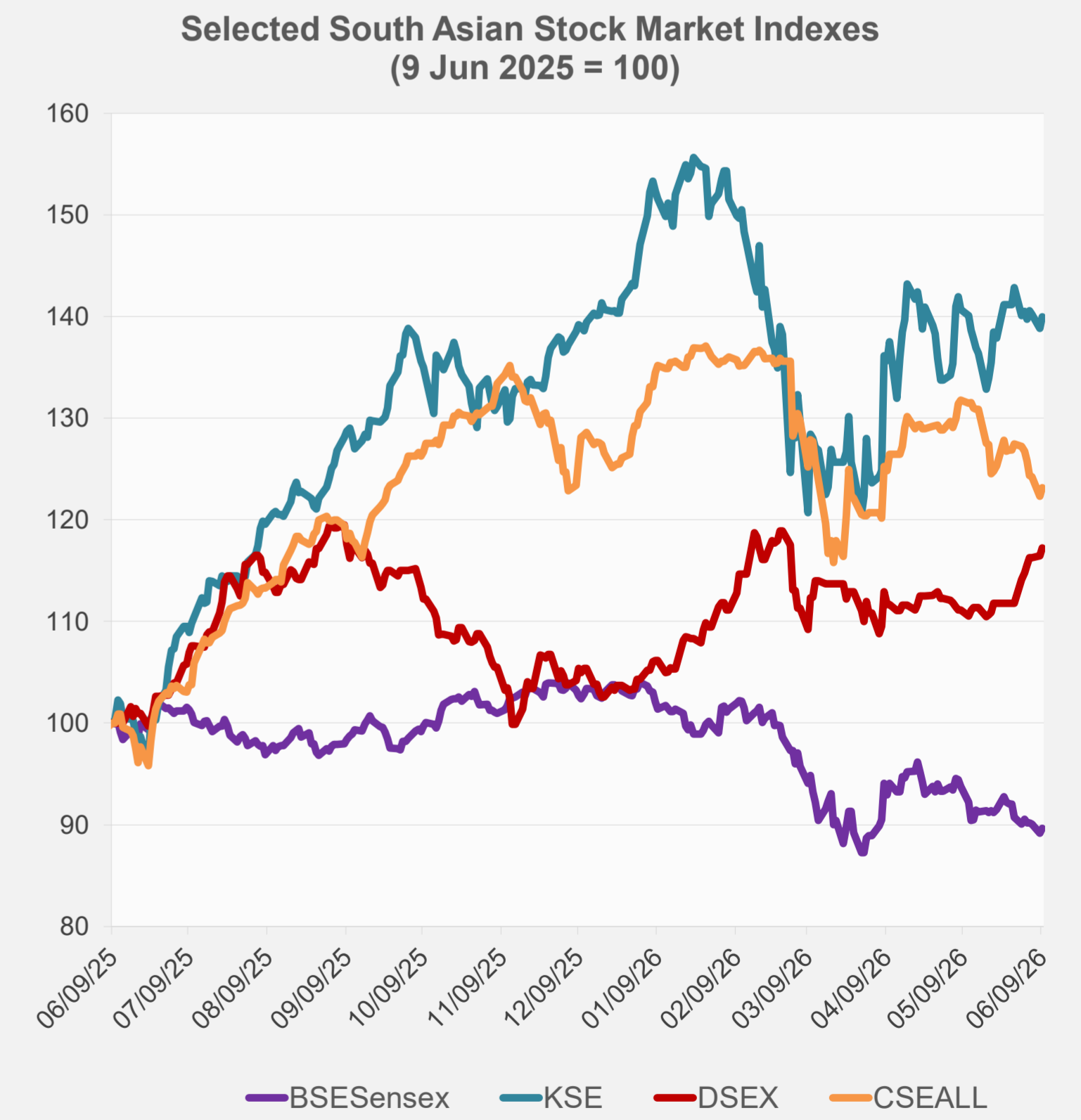
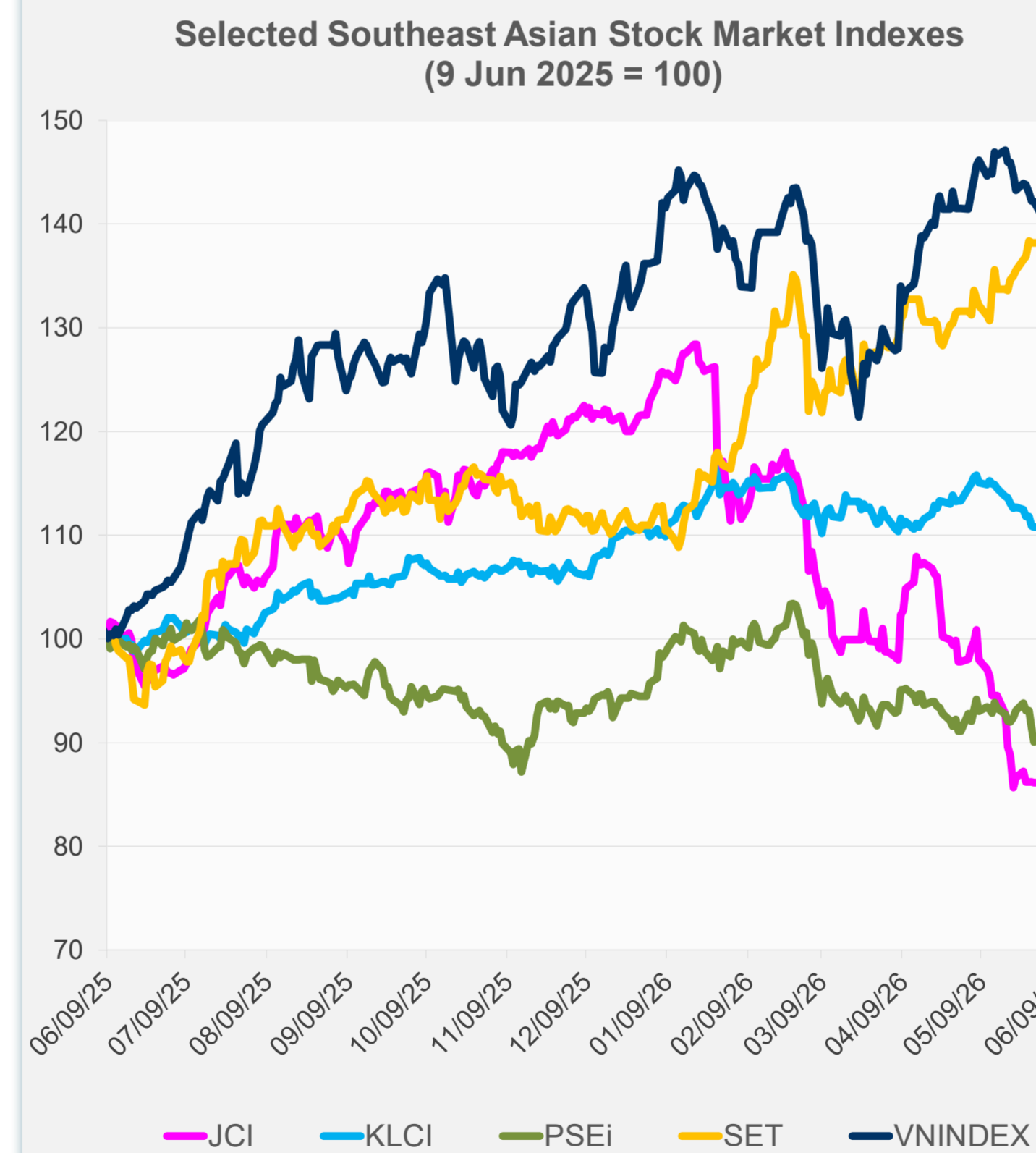
Source: Haver Analytics.

Daily Market Watch  
**STOCK INDEXES**

	Latest Closing	% change from Previous Day	% change from 01-Jan-26
US Dow Jones Ind Avg	50,872.11	0.17	5.84
US NASDAQ	25,678.82	-0.97	10.48
US S&P 500	7,386.65	-0.26	7.91
UK FTSE 100	13,741.89	-0.86	22.03
EURO STOXX 50	6,049.74	-0.21	4.46
Japan NIKKEI 225	65,416.63	2.17	29.95
Bangladesh DSEX	5,519.49	0.67	12.40
PRC Shanghai Comp.	4,010.03	1.28	1.04
Hong Kong, China HSI	24,565.90	-0.37	-4.15
India BSE Sensex	73,918.76	0.54	-13.23
Indonesia JCI	5,746.65	7.57	-33.54
Korea, Rep. of KOSPI	8,096.93	8.18	92.14
Malaysia KLCI	1,675.50	-0.24	-0.27
Pakistan KSE 100	170,450.70	0.79	-3.41
Philippines PSEi	5,945.71	1.13	-1.77
Singapore STI	5,023.25	1.20	8.12
Sri Lanka CSEALL	21,547.17	0.67	-4.76
Taipei, China TWSE	44,704.44	2.76	54.35
Thailand SET	1,584.14	1.44	25.76
Viet Nam VNINDEX	1,793.05	0.14	0.48



NIE = Newly Industrialized Economies



Sources: ADB calculations using data from Bloomberg and CEIC Data Company.

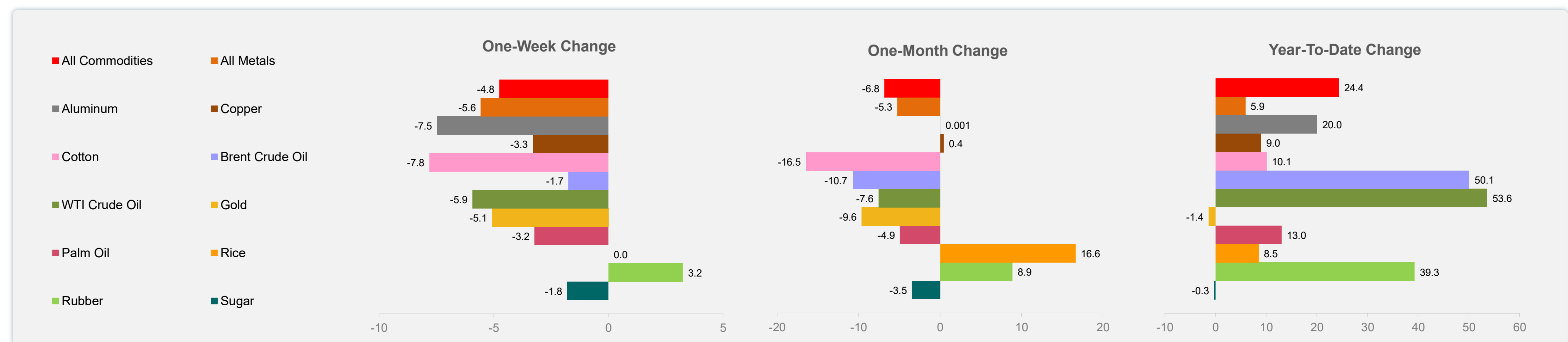
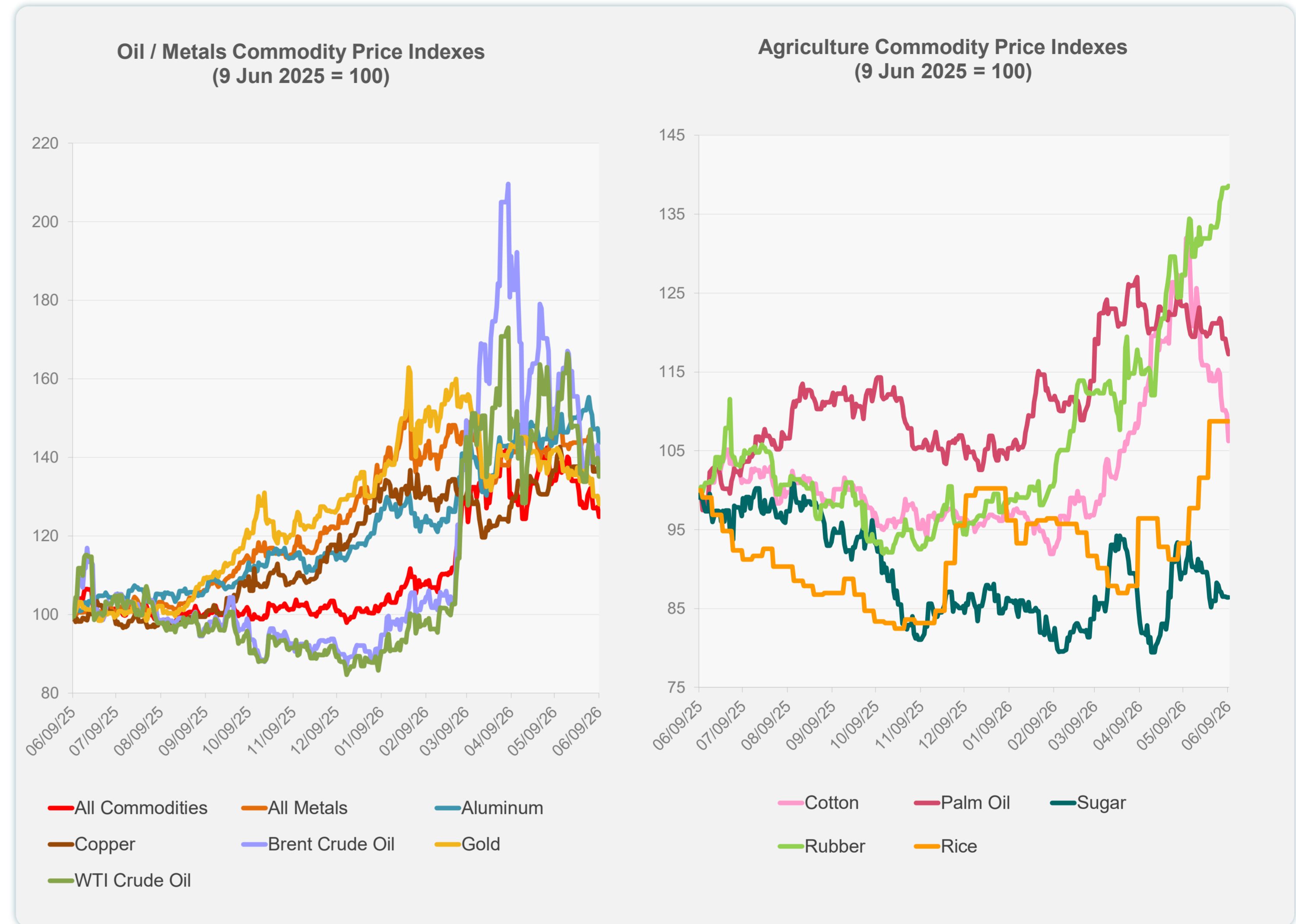


Sources: ADB calculations using data from Bloomberg and CEIC Data Company.

Daily Market Watch  
**COMMODITY PRICES**

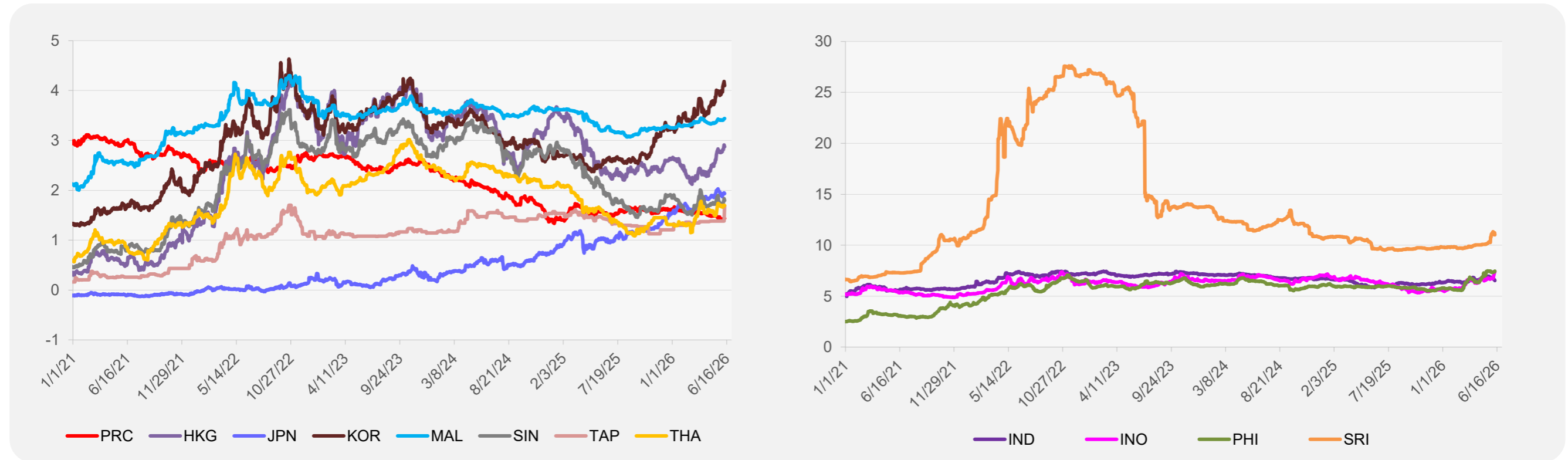
	Unit	Latest Closing	% change from Previous Day	% change from 01-Jan-26
S&P All Commodities	US\$	682.13	-1.90	24.36
S&P All Metals	US\$	469.93	-1.41	5.90
Aluminum	US\$/metric ton	3,562.67	-2.44	20.04
Copper	US\$/metric ton	13,573.34	-0.14	8.99
Cotton	US cents/lb	68.26	-3.03	10.06
Brent Crude Oil	US\$/barrel	93.72	-5.02	50.08
WTI Crude Oil	US\$/barrel	88.20	-3.40	53.61
Gold	US\$/troy oz	4,260.85	-1.60	-1.35
Palm Oil	US\$/metric tonne	1,094.58	-0.72	13.00
Rice <sup>1</sup>	US\$/metric ton	484.00	0.00	8.52
Rubber <sup>2</sup>	US\$/kg	299.40	0.20	39.26
Sugar	US cents/lb	14.75	0.00	-0.27

<sup>1</sup> Latest closing price from 27 May 2026.  
<sup>2</sup> Singapore Exchange, Ribbed Smoked Sheet Rubber.

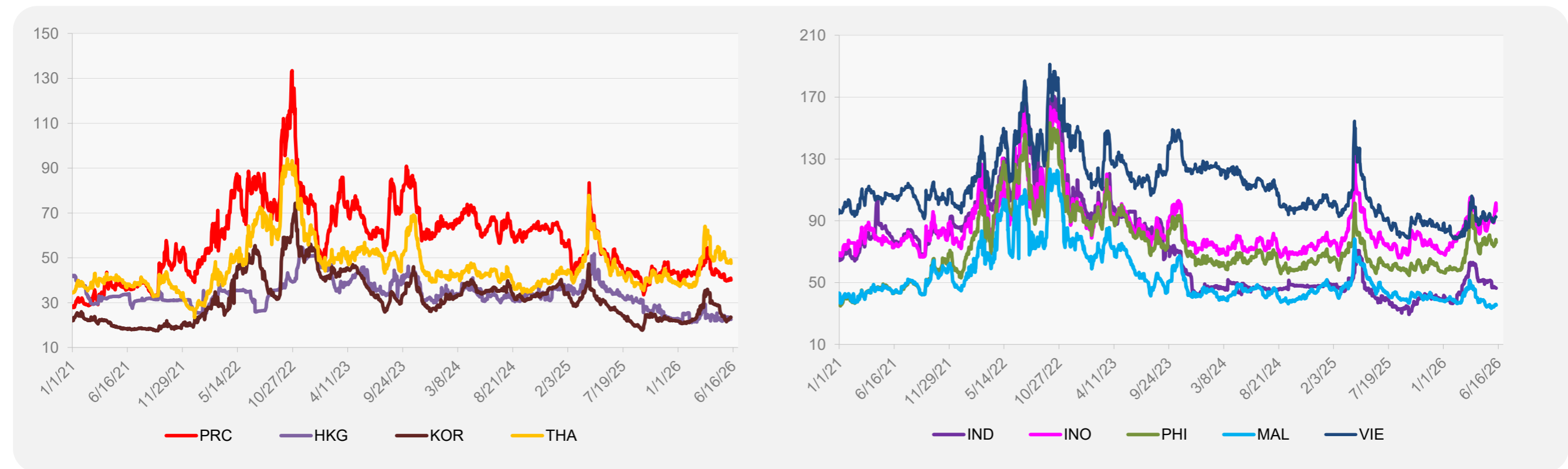


Source: ADB calculations using data from Bloomberg.

### 5-YEAR LOCAL CURRENCY GOVERNMENT BOND YIELDS (%)



### 5-YEAR CREDIT DEFAULT SWAP<sup>1</sup>



<sup>1</sup> In USD and based on sovereign bonds.  
Source: ADB calculations using data from Bloomberg.